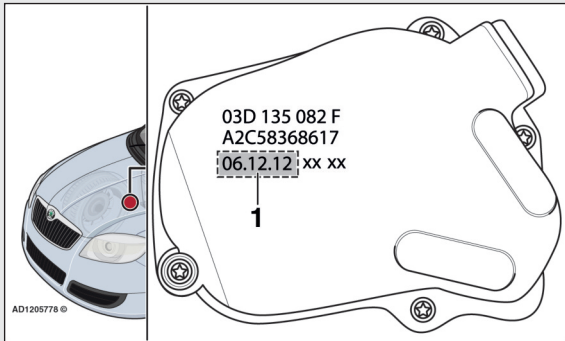


Skoda Roomster - Hard Start & MIL on

Question: A 2010 Skoda Roomster 1.2 is currently in the workshop suffering with difficult engine starting and the engine malfunction indicator lamp (MIL) illuminated. There are trouble codes relating to the throttle control unit stored in the ECM fault memory. Is this fault known to you?

Answer: Yes, this fault is known to us and it affects the Fabia II and Roomster models with CGPA engine code. The cause is likely to be a faulty throttle control unit. Inspect the production date code on the throttle control unit Fig.1.1. If



production date is before 06/12/12, replace throttle control unit. This should rectify the fault.

Autodata