



AUTOELECTRO
Since 1986
STARTER MOTORS & ALTERNATORS



Alternator/Starter Failure Caused by Fuel and Water Ingress

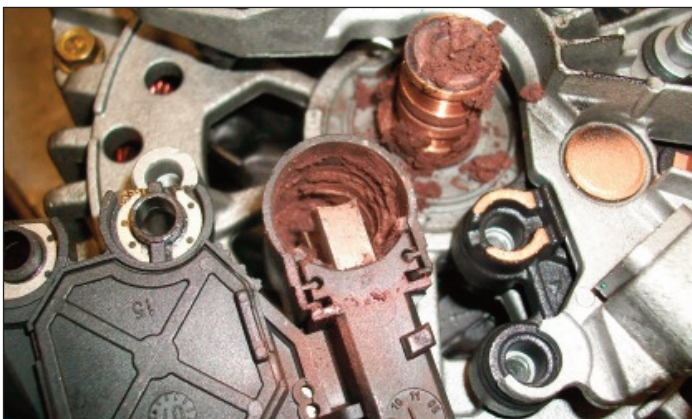
The number of failures caused due to fluid contamination is rising. Many applications now have starter motors and alternators installed under or around some form of lubricant/fluid component or pipes. Fuel filters, power steering pumps or pipes, coolant pipes and fuel lines are all areas which can cause fluid to enter the starter motor or alternator causing damage to their internal components and resulting in premature failure. Below are some vehicles commonly affected by this type of fault:

Ford Mondeo 1.8 TD 1993-2000

Leaking connections at the oil supply line on the turbo and the oil filter connection can allow oil to enter the alternator and cause malfunction. Due to the alternator being located under the turbo, any oil leaking from the turbo will pass into the alternator causing accelerated component wear and premature failure.



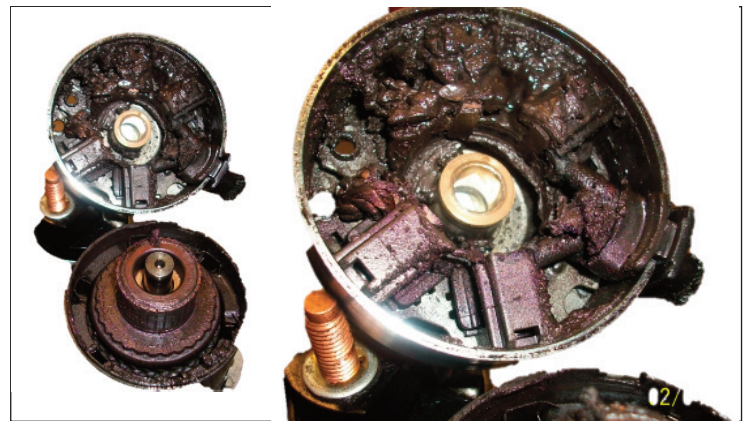
Oil contamination on from bracket of the alternator which enters the alternator from the external source



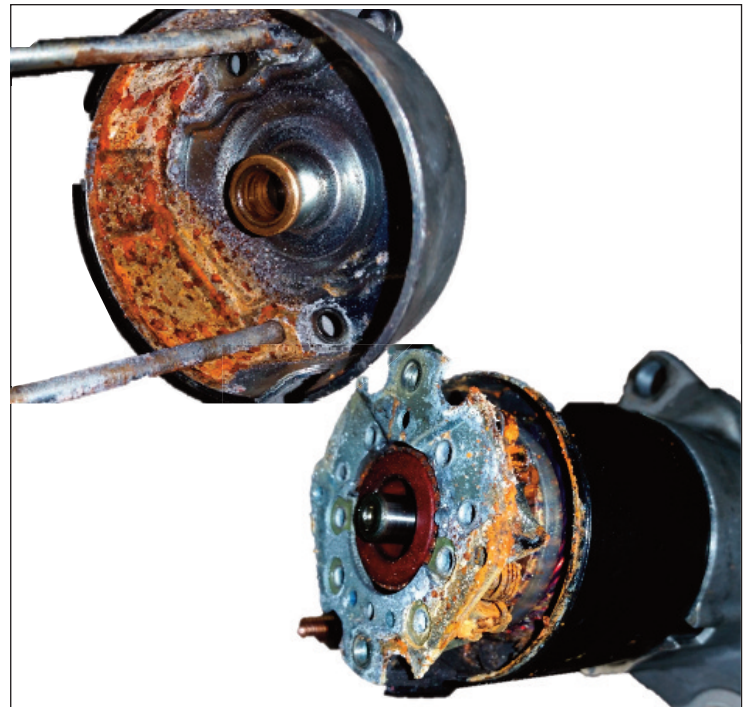
Oil contamination causing swarf build up on slip rings and brushes

Chrysler Voyager 3.3 1997-2007

There is an unknown source of water contamination which cause the premature failure of this starter motor. This leak needs to be located and necessary steps taken to prevent this from reoccurring must be taken.



Fluid contamination causing damage to internal components of starter motor resulting in premature failure



Water contamination causing rust build up and premature failure of starter motor and its components.