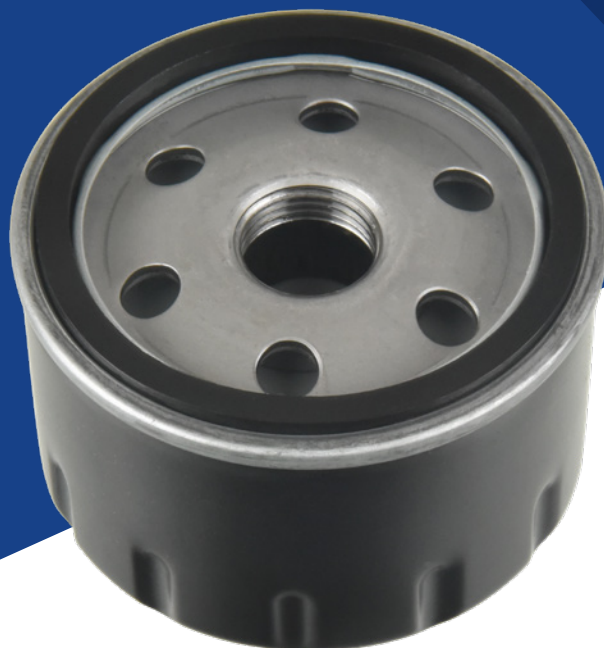


Blue Print ADBP210077

To fit:
BMW i3 with range extender



EN

Oil Filter

Attention!



According to the vehicle manufacturer's recommendations, it is necessary to disconnect the high voltage battery before replacing the engine oil and filter.

Following disconnection, the engine oil and filter can be replaced in the conventional manner. However, please note, when refilling the engine with oil, the service flap of the engine sound insulation (which covers the oil filler cap) may interfere with the oil filling process. Prior to removing the oil filler cap, it is recommended that the service flap is folded behind the edge of the engine compartment to give unobstructed access to the oil filler neck. This is to avoid any unnecessary spillages of engine oil.

After the oil and filter has been replaced and the high voltage system has been re-energised, the range extender needs to be tested before the oil level is re-checked.

This service function should be carried out using a suitable diagnostic tool. Alternatively, the manual starting procedure can be followed.

Range extender operation test:

1. Open the tailgate.
2. Switch on the ignition (Drive Readiness) and select the "Park" gear position.
3. Within 60 seconds, press and hold the accelerator pedal.
4. Within 20 seconds, press the brake pedal three times and hold down.

For more technical information please visit: partsfinder.bilsteingroup.com

Blue Print ADBP210077

To fit:
BMW i3 with range extender



EN

5. While continuing to depress the brake pedal, release the accelerator pedal and press the Start-Stop button.
6. Once completed, providing the battery has less than 75% state of charge, the engine should start.
7. Press the Start-Stop button to shut down the engine.
8. Re-check the oil level and reset the service indicator as necessary.

Service interval indicator reset:

1. Before starting this procedure, ensure the vehicle time and date are set correctly.
2. Without pressing any pedals, press the Start-Stop button and switch on the ignition.
3. Press and hold the trip distance recorder reset button (in the bottom left corner of the display) for approximately 10 seconds - until the first service item is displayed.
4. Press the button in the bottom left corner of the display to select the service item to be reset.
5. Press and hold the button for 3 seconds until the message "Reset?" is displayed.
6. Press and hold the button for another 3 seconds until the message changes from "Reset in progress" to "Reset successful".
7. Press the Start-Stop button to switch off the ignition.

For more technical information please visit: partsfinder.bilsteingroup.com