



## PSA & Toyota

C1, 107, Aygo 1.0

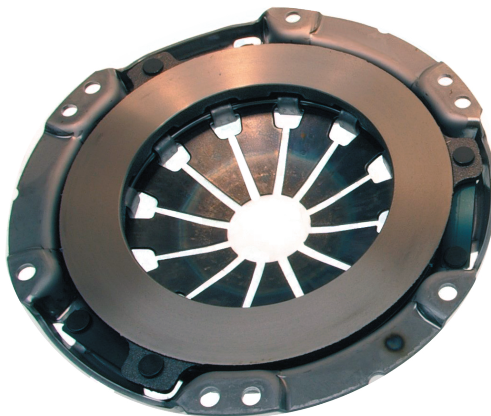
CLTB 0017

### Borg & Beck Introduce Improved Clutch To Increase Service Life

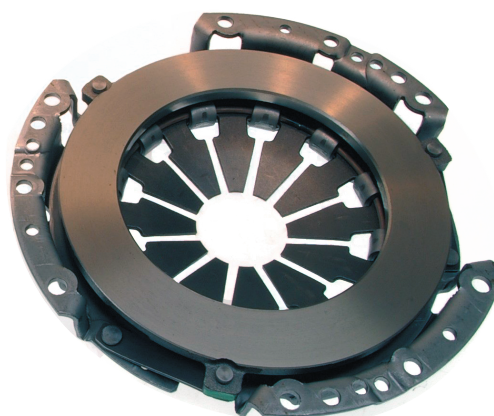
**Concerns;** Reported short clutch life of OE 180 mm dia clutch kit HK2154

**Method;** Due to the reported OE short clutch life we have introduced clutch kit HK2327 which is a 190mm dia. This is directly interchangeable with the the 180mm dia OE clutch which should consequently give a longer clutch life.

HK2154



HK2327



[www.borgandbeck.com](http://www.borgandbeck.com)

TECHNICAL INFORMATION