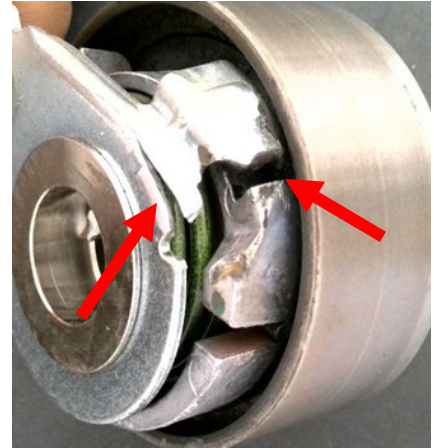


## An incorrect setting of the tensioner pulley can cause engine damage

PSA 1.6 HDi / BlueHDi, Ford 1.5 TDCi (article no. CT1203, CT1203K1, CT1203WP1)

### Problem:

Teeth have been sheared off the timing belt, the tensioner pulley arrester body is torn and the full load stop is incorporated.



### Cause:

During the tensioning procedure, the hole in the tension indicator is brought into contact with the hole in the arrester body. As a result, the tension is set far too high and the full load stop is incorporated by the recurring clash with the arrester body until it finally tears or aborts.



### Solution:

The tension indicator must be set centrally in the recess of the arrester at the end of the tensioning procedure. Observe the tensioning direction.

