



FAG

SERVICE INFO



FAG 0514

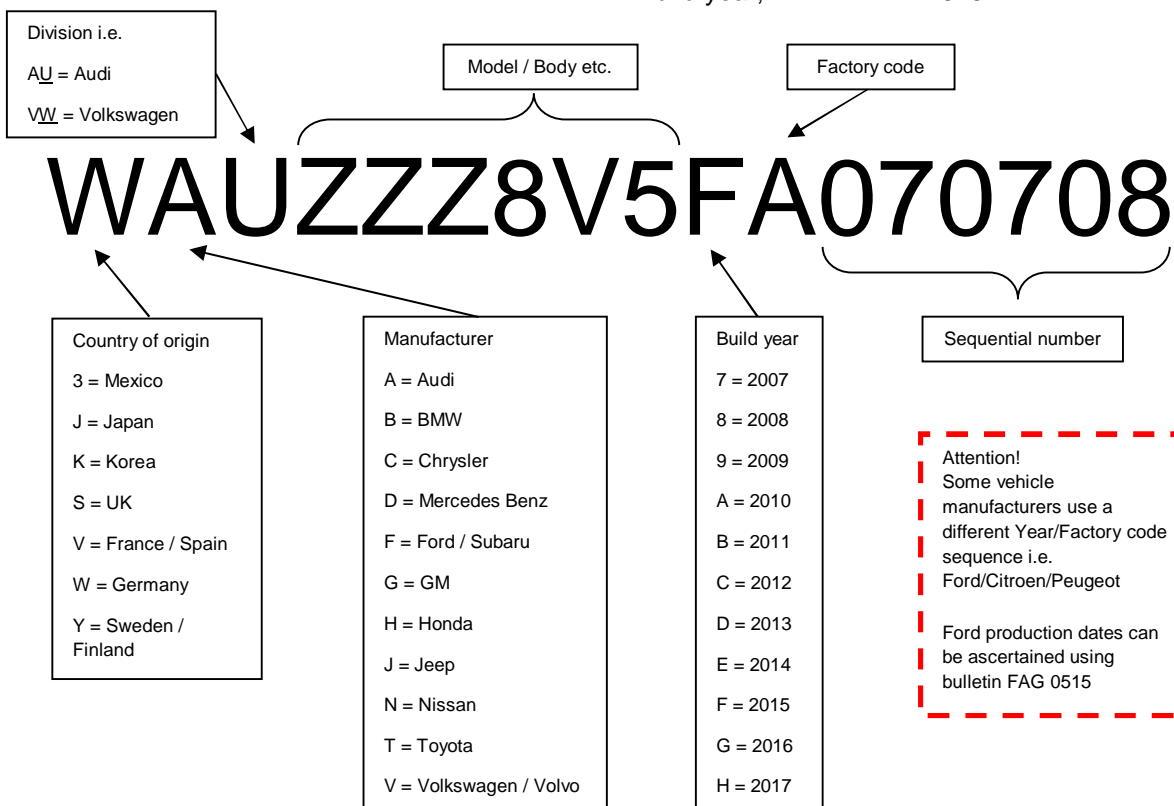
Understanding VIN codes

This bulletin is to clarify the information that is often required to correctly identify parts on many catalogue applications.

The bulk of the VIN code is made up of; Country of origin, Vehicle manufacturer, Model, Body shape etc. The last eight digits is the year of manufacture, followed by a factory code and then a sequential number. This is why so many parts listings use this part of the VIN to clarify parts.



The example shown here is;
 Country of origin; Germany
 Manufacturer; Audi
 Model; A3
 Build year; 2015



- For accurate model information please see LuK catalogue
- Die genaue Fahrzeugzuordnung entnehmen Sie bitte dem LuK-Katalog
- Pour plus d'information sur les applications veuillez vous référer au catalogue LuK
- Para obtener información sobre el modelo, rogamos consulte el catálogo de LuK
- Per informazioni sul modello consultare il catalogo LuK

Phone : +44 (0) 1432 264 264*
 Fax : +44 (0) 1432 375 760
 E-Mail : hfd-pm@schaeffler.com
 www.schaeffler-aftermarket.co.uk
 * calls from the UK : 08457 001100