



## Tech Tip

### AUTOMOTIVE <> PASSENGER CAR COOLING SYSTEM

#### BULLETIN TT005-15

##### > MAKE:

All makes with a  
water pump

##### > MODEL:

All models with a  
water pump

##### > YEAR:

All years with a  
water pump

##### > ENGINE:

All engines with a  
water pump

#### WATER PUMP FAILURE SIGNS

If during the course of an inspection the water pump is found to look like any of the below, Gates recommends properly flushing the system, filling the system with a new mixture of the correct coolant, and possibly replacing the water pump depending on the issues found.



Deposits / Calcium Buildup



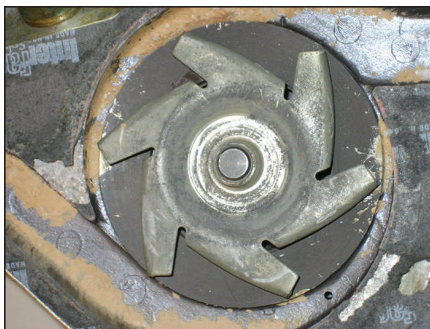
Deposits / Calcium Buildup



Rust/Corrosion



Rust/Corrosion



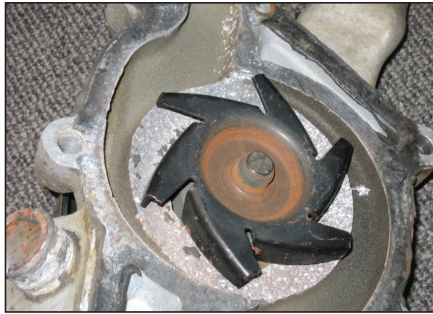
Deposit Buildup



Rust/Corrosion

**For more information, please reference these informational videos:**

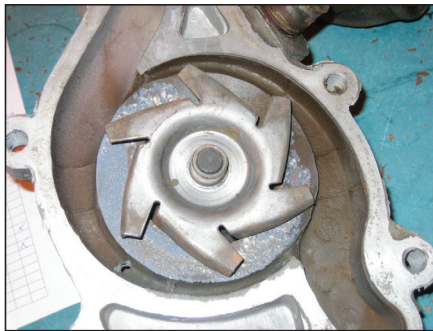
- › Coolant contamination, click [here](#).
- › Engine coolant, click [here](#).
- › Water pump installation and inspection, click [here](#).



**Cavitation / Corrosion**



**Cavitation / Corrosion**



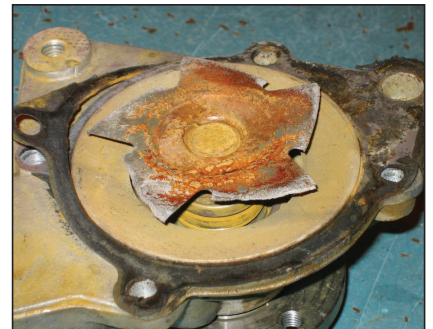
**Cavitation / Corrosion**



**Cavitation / Corrosion**



**Chemical Etching**



**Corrosion**

**GATES CORPORATION <> WORLD HEADQUARTERS**

1551 Wewatta Street / P.O. Box 5887  
Denver, Colorado 80202, U.S.A.  
303.744.1911  
**Gates.com**

**GATES CANADA INC.**

225 Henry St. Bldg. 8  
Brantford, Ontario N3S 7R4  
1.519.759.4141

**Automotive Tech Email <>**  
**[apateam@gates.com](mailto:apateam@gates.com)**



For more information, please contact our Technical Department at 303.744.5651 or [apateam@gates.com](mailto:apateam@gates.com).

**With over 100 years of experience,  
Gates products are trusted by professional  
technicians around the world.**