

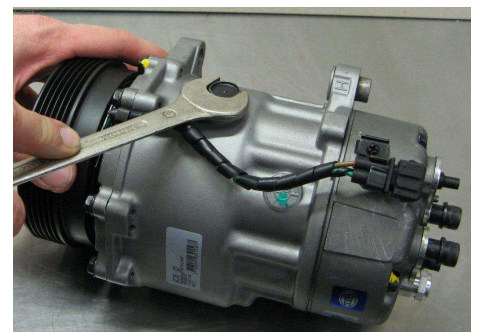
Are BHS compressors filled with oil on delivery?

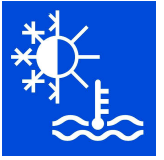
No matter the delivery state of the compressors, the oil filling level and viscosity must be checked for every compressor before installation in the vehicle, and corrected according to the manufacturer's specification and enclosed documentation if necessary.

The reason is that many compressors can not only be used in one vehicle, they can be used in a wide range of different vehicles. The respective oil quantity must be adapted accordingly.

The individual steps are clearly presented in this description.

Since most compressors do not have an oil draining screw, oil can only be removed through the high and low-pressure fitting or through the filling bore hole in these cases.

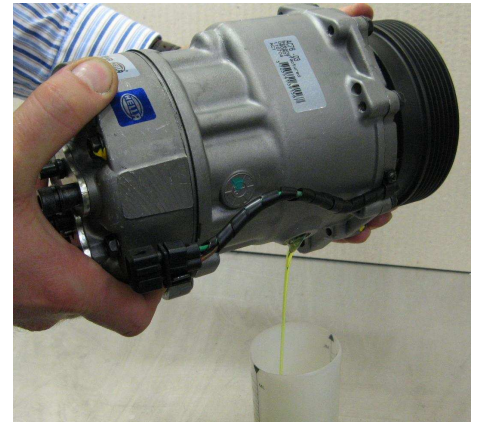




1. Pour the filled oil into a receptacle

Turn the drive shaft to make sure that all the oil is removed.

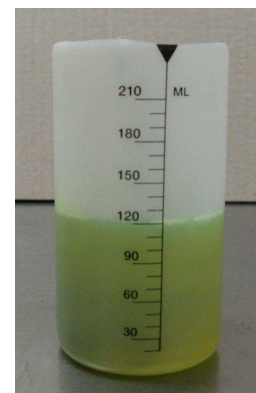
e.g. with filling bore hole

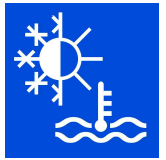


e.g. without filling bore hole
through the high-pressure connection



2. Measure the drained oil quantity





3. Determine the oil quantity to be filled into the compressor

If the complete oil quantity has been removed from the system for the the air-conditioning system to be flushed, the complete oil quantity must be filled into the compressor again. The quantity specifications can be found in the Hella online catalogue in the filling quantity handbook (following login to the Hella Aftermarket Club) or with the aid of respective specialist literature.

4. Fill the prescribed quantity into the compressor

The complete prescribed quantity is filled into the compressor. If the device has not filling bore hole, then through the low-pressure connection. Turn the drive shaft at the same time. The complete system quantity might not be able to filled into the compressor. In these cases, feed the residual quantity through the service unit.

e.g. with filling bore hole



e.g. without filling bore hole
through the low-pressure connection

