

Exchanging the rain/light sensor using a silicone repair set

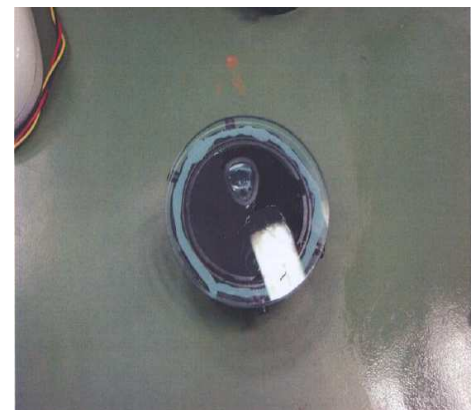
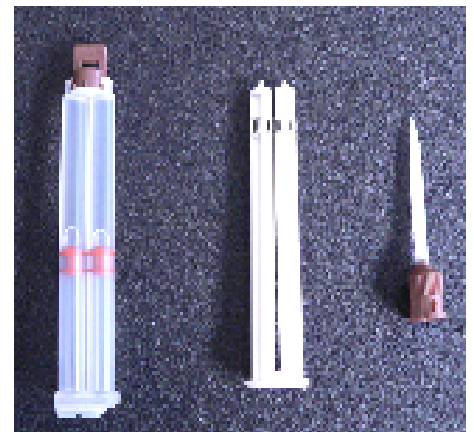
General information

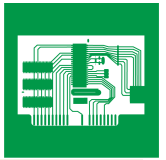
Increasingly, rain/light sensors are fitted to the windscreens of modern cars. If it is necessary to replace the windscreen, the question of how to deal with these sensors therefore arises more and more often.

A silicone repair set for reusing the sensor is now available on the aftermarket. This set is intended to offer the customer the possibility of attaching the existing rain/light sensor to the new windscreen without great expense of time (low costs).

We have reconstructed the repair and would like to point out the following:

- after checking reusability and carrying out a successful functional test, the sensor must be separated from the optical element. Here, care should be taken that the snap-fit tabs and the clamps are not damaged.
- old glue is now removed from the optical element, and it must be ensured that all residues are removed in a dust-free manner, without damaging or scratching the optics.
- after this, the new glue should be filled into the optical element. This must take place in a dust-free and bubble-free manner, with precisely the correct quantity (level), and without glue flowing into the optics. Even the smallest irregularities in the gluing bed due to bubbles, the inclusion of dust and incomplete forming of the gluing cushion (for correct laying on the windscreen) inevitably lead to malfunction of the sensor (see the second picture on the right: coupling





© Hella KGaA Hueck & Co., Lippstadt

of the optics only in the right-hand area on the windscreen).

- after the glue has dried, the optical element can be mounted on the windscreen. Here, it should be noted that the optical element may not be moved or removed, as the glue would not then be smooth or lie fully on the optical element and the windscreen, which would lead to malfunctions.



Conclusion:

- in our opinion, the method shown here of reusing the rain/light sensor has more possibilities of errors and resultant additional expenditure than the replacement of the generally available original optical element.
- at the current hourly rates of garages, the time spent reusing or repairing bears no relation to the value of the product.
- it is also worth noting that the original optical elements are manufactured fully automatically with a final quality check in accordance with the respective manufacturer specification, and that the normal warranty applies to such items purchased, while no warranty can be accepted for the newly filled optical element as this is a non-allowed repair and the function of the sensor under ambient conditions can no longer be reproduced.