



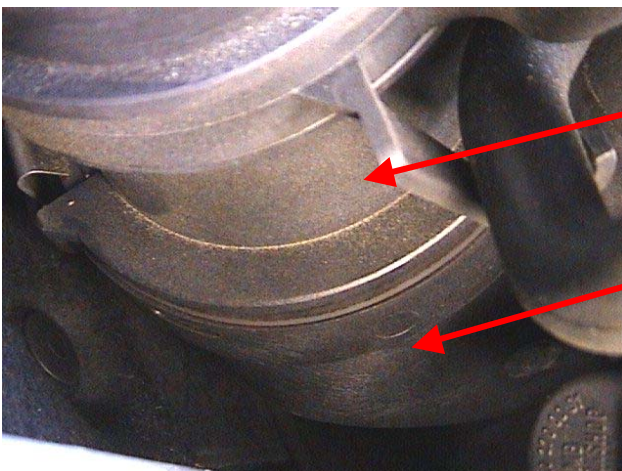
Mercedes-Benz E 320 (W210)

Engine dies and does not restart

If the engine dies during driving and does not restart, a possible cause could be the intake hose between the airflow meter and the inlet pipe. The intake hose detaches from the air flow meter (picture top).

To solve the problem refit the intake hose to the airflow meter (picture bottom).

Check the fault memory, with a suitable code reader, for fault codes and delete the saved fault codes.



Airflow meter

Intake hose