



Technical Information

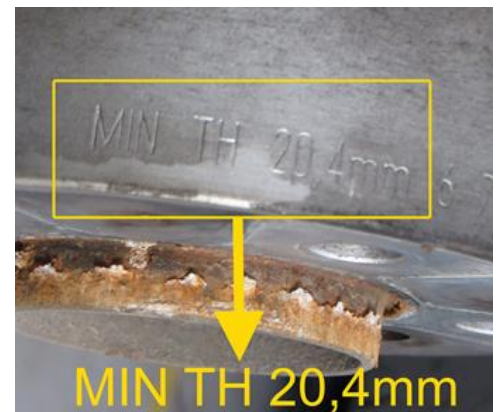
Testing the minimum thickness of a brake disc

General information

The wear limit of a brake disc is defined by the manufacturer's specification of the minimum thickness. This value in millimeters is stamped on the outer edge or on the brake disc chamber.

- MIN TH = Minimum Thickness

The value is calculated so that on reaching this thickness, under normal driving conditions and taking into account the previous brake pad service intervals, another set of brake pads can be installed.



Tests

Check the wear limit of the brake disc using a suitable tool (brake disc gage).

1. Place a gauge at several measuring points (A) over the friction ring and take measurements.
2. Compare the measurement results and compare the lowest value with the setpoint value (minimum thickness).

If the desired value is undercut, the brake disc must be replaced.



Repair note

- Always remove the brake discs in pairs
- New brake pads may only be installed if the minimum thickness of the brake discs has not been undercut.

Please observe the specifications in the maintenance and repair notes provided by the respective vehicle manufacturer.