



VW

Beetle, Bora, Golf, Polo

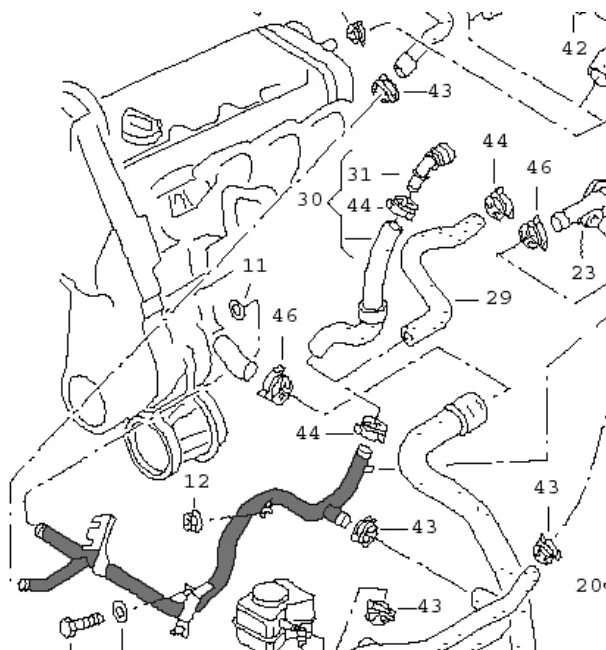
With engine: 1.9 l diesel

(AGP, AGR, AHF, ALH, AQM)

Coolant loss at the coolant pipe

In the case of the above-mentioned vehicles, coolant may escape at the O-ring seal of the coolant pipe, due to unfavourable tolerances of the components. The leak is located in the plug area, between the coolant pipe and the engine block.

In case of complaint, the old pipe should be replaced with a modified coolant pipe (drawing, grey) that can be obtained from an authorized dealer. Before using the new pipe, the plug-in opening should be cleaned, and the O-rings slightly wetted with coolant. Following this, the coolant circuit must be filled up and vented. This is followed by a leak test.



Bulletin