



VW

Passat (3B, 35i)

With Motometer instrument cluster

Various functional failures

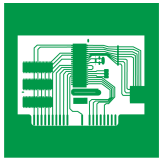
If, in the case of the above-mentioned vehicles, there are various functional failures in the instrument cluster, the cause may be faulty soldered joints between the central plug connection and the circuit board. The functional failures may manifest themselves as follows:

Sporadic/permanent failure of the charge control lamp, handbrake control lamp, instrument-cluster lighting etc.

Often, operation can be temporarily restored by knocking on the dashboard or on the instrument cluster. Before replacing the entire instrument cluster, the cause should be checked, and repair of the instrument cluster should be considered.

After removal from the vehicle, the instrument cluster can, as follows, be disassembled, checked and, if necessary, repaired:

- Remove the 2 screws from the plastic cover (Fig. 1), remove the cover
- Remove the temperature/fuel gauge and the revolution counter
- Remove the 4 screws for the speedometer, remove the speedometer (Fig. 2)
- Remove the screw on and the screw next to the voltage stabilizer (Fig. 3)
- Carefully remove the circuit board, pressing lightly from behind and keeping an eye on the internally-located snap-fit tabs while doing so
- Check the connection pins for receiving the central plug (Fig. 4)
- Using a magnifying glass (Fig. 5+6) to check the



soldering points of the central connection plug and, if necessary, resolder

- Assemble the instrument cluster in reverse order
- Fit the instrument cluster into the vehicle
- Carry out a functional test



Fig. 1



Fig. 2

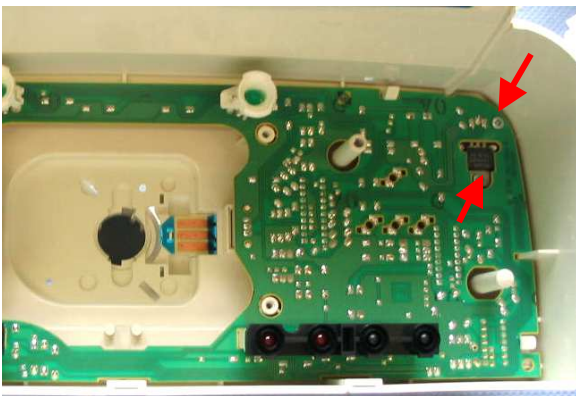


Fig. 3

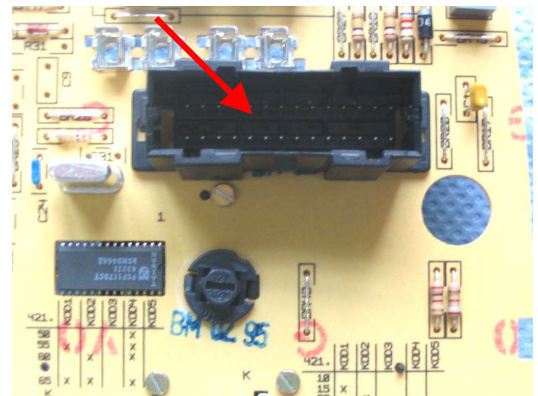


Fig. 4

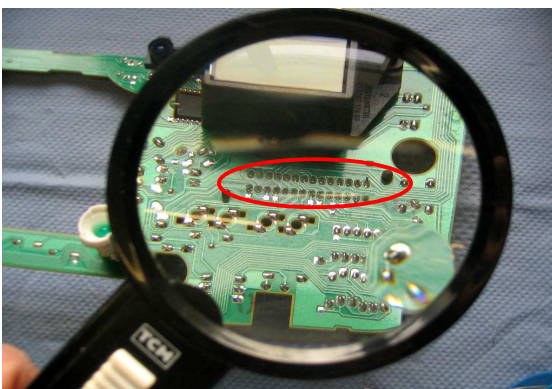


Fig. 5

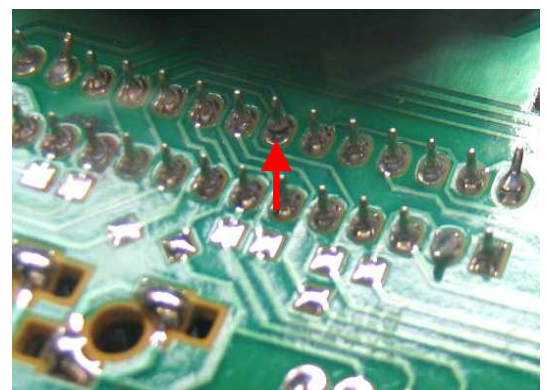


Fig. 6