

# SERVICE-INFO



## Understanding Vauxhall/Opel engine numbers

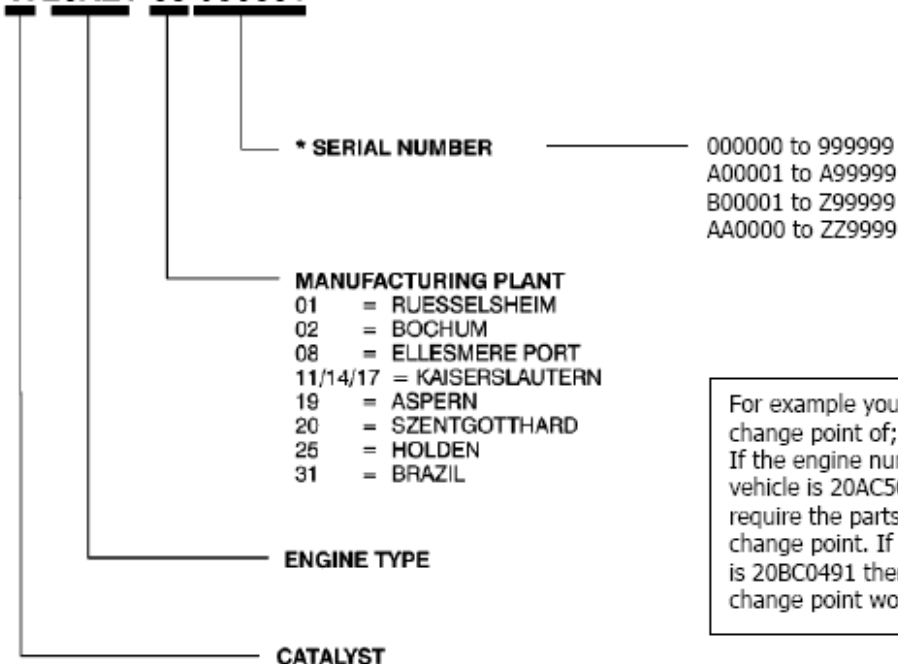
This bulletin is to clarify the information required to correctly identify the parts fitted to many of the Vauxhall/Opel range. An increasing number of calls to the Technical Hotline is demonstrating some confusion on these vehicles as two methods can be used.

**Seven digit type;** Many of the Vauxhall/Opel catalogue listings are defined by a sequential, seven digit engine number.

**Eight digit type;** Some Vauxhall/Opel engines are manufactured in more than one plant. This is why some components have multiple change points.

On the vast majority of the Vauxhall/Opel range, the catalogue listing will show the plant or plants used as part of the engine number (see below). In these cases the six digit serial number after the plant code is the critical part of the sequence. The serial number is formatted in an alpha numeric sequence as shown in the example below.

**X 20XEV 08 000001**



For example you may find the change point of; 20AX2408  
If the engine number on your vehicle is 20AC5021 then you would require the parts listed up to the change point. If your engine number is 20BC0491 then the parts after the change point would be required.

Rarely but in some cases the component may not be listed against the production plant in your engine number. If this is the case then either OE numbers or numbers off the parts fitted are required to check availability of the correct part.

Appropriate spare parts can be found in our on-line catalogue at **[www.Schaeffler-Aftermarket.com](http://www.Schaeffler-Aftermarket.com)** or in **[www.RepXpert.com](http://www.RepXpert.com)**.

INA 0501

Subject to technical changes  
© 2011 Schaeffler Automotive Aftermarket

### For further information:

Phone: +44 (0) 14 32 264 264\*

Fax: +44 (0) 14 32 375 760

Info@LuK-AS.co.uk

[www.Schaeffler-Aftermarket.com](http://www.Schaeffler-Aftermarket.com)

\* Calls from within the UK 08457 001100

