



professional

Chain tensioner

fits
BMW E87 116i with
N45 115 PS / 85 KW engines

PROBLEM

The timing chain jumps even though all the components are properly fitted. Jumping of the chain can cause the engine to run unevenly and can even lead to engine damage. This affects vehicles produced between March 2004 and August 2007.

CAUSE

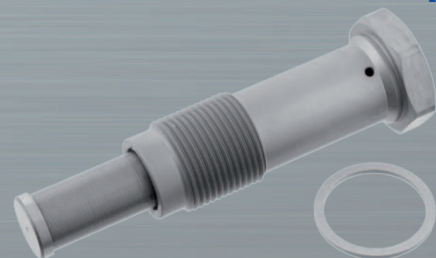
The original version (repl. No 11 31 1 439 851) of the chain tensioner has a larger hole above the thread (see Fig. 1). The car manufacturer fitted this version of the chain tensioner in the vehicles referred to above. The result is that the chain can jump under unfavourable loads. In the worst case, valves and pistons come into contact with each other - resulting in engine damage. This version has been replaced by the car manufacturer and is no longer in use.

SOLUTION

SWAG recommends using only current chain tensioner SWAG 20 92 1275 (repl. no. 11 31 7 567 680). This chain tensioner has a small hole below the head (see Fig. 2). Consequently, these ensure perfect guidance of the chain under all conditions and prevent jumping.

PLEASE NOTE

The previous design of the chain tensioner is still frequently being offered on the market. The new design is also on sale but does not include the necessary seal ring!

**1****OLD****2****NEW****SWAG no. 20 92 1275**

Repl. No. 11 31 7 567 680