



# professional

## Chain tensioner

fits  
Opel 2.0l turbo and 2.2l petrol engines

### PROBLEM

Although all the components have been correctly fitted, rattling noises are often present (caused by the elongation of the timing chain). If the timing chain slips as a result, then the engine can run erratically and misfire and in the worst case cause extensive engine damage. This affects Z22YH and Z22SE engines.

### CAUSE

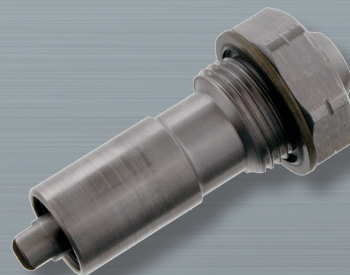
A blocked timing chain tensioner. The original version (repl. no. 0636549) of the chain tensioner had a green O-ring and a rubber-lined washer (see Fig. 1). The vehicle manufacturer fitted this version in the engines mentioned above. A modified chain tensioner has been used in production since model year 2009.

### SOLUTION

SWAG recommends using only the new chain tensioner SWAG 40 93 3044 (repl. no. 4807 839). This is provided with a rubber-lined metal washer under the head (see Fig. 2). This ensures perfect guidance of the timing chain.

### PLEASE NOTE

We always recommend that a new timing chain (SWAG 40 93 3043 repl. no is 5636 396) is fitted when replacing the chain tensioner. Both components are included in the chain kits SWAG 99 13 3042 (fits Z22YH) and SWAG 99 13 3045 (fits Z22SE)!

**1****OLD****2****NEW**

**SWAG no. 40 93 3044**  
repl. no 4807 839

### NOTE ON FITTING

To prevent the timing chain from skipping when the engine is running, the chain tensioner should not be brought into the working position until the chain has been fitted. Please refer to the attached SWAG Info for details.