

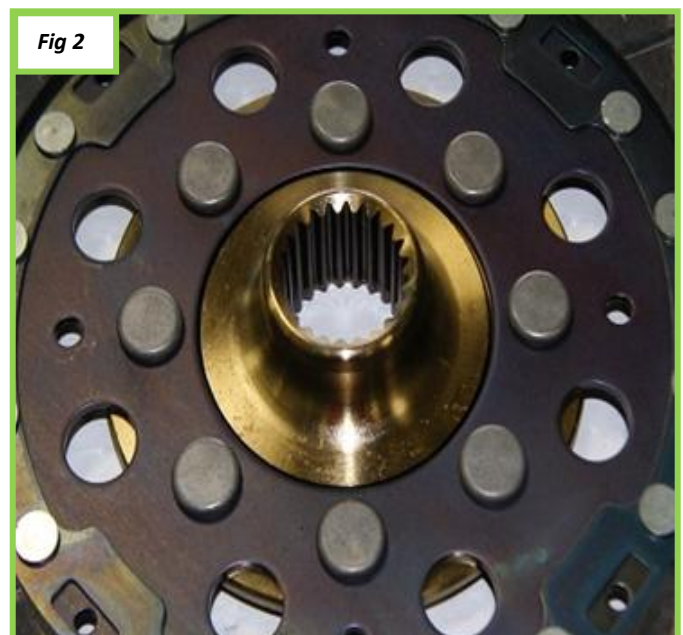
## Fitment of friction plate in clutch kit 826836

Valeo Technical Support and the Warranty Claims Department are receiving a number of calls and claims regarding the fitment of the friction plate in clutch kit 826836.

Please be aware when fitting the friction plate in 826836 the side stating "made in Korea" (Fig 1) fits into the clutch cover and the side with the raised splined hub (Fig 2) fits into the recess of the flywheel.



*Friction plate side to be mounted **gearbox side***



*Friction plate side to be mounted **flywheel side***