

Previous Technical Bulletins

CL 034 Damaged Drive Plate

Vehicles: All Models

The Valeo Service Warranty Department have received Conversion Kits & DMF Module Kits (clutch & flywheel that are sold together in the same kit), where damage has been inflicted on the clutch plate and it cannot be used. After investigating, the damage caused has been traced to the clutch friction plate coming into contact with the locating dowels on the flywheel.

This issue will occur if the kit is not transported correctly.



Image showing how clutch plate becomes damaged from locating dowels on flywheel

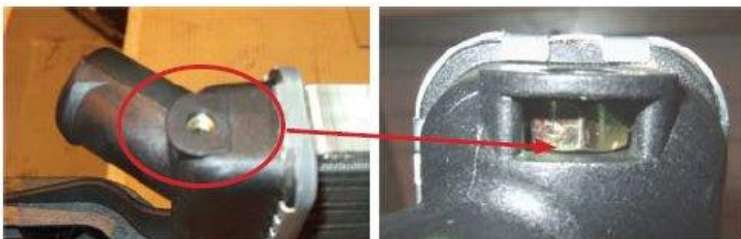
Valeo clutch kits sold with flywheels **MUST ALWAYS** be transported and stored horizontally. If the kit is transported vertically, the clutch cover could become detached from the flywheel and allow the drive plate to move between the two parts.

EC 009 Fitting Warning 732825

Vehicles: Vauxhall Corsa C 2000 1.0/1.2/1.4

The Valeo Service Warranty Department have received a high level of returns regarding the Vauxhall Corsa radiator part number 732825.

The units are being returned as a warranty claim stating a leak from the top of the left hand header tank, on the corner of the tank directly above the top hose.



After inspection of the parts returned, the cause of the leak has been found to be a small crack in the radiator header tank, directly beneath the captive nut for the top radiator mounting bolt.

Further examination of these units displaying this issue has highlighted the cause of the leak to be due to a fitting fault. The fracture to the header tank has been caused by the mounting bolt being over tightened, resulting in the bolt to bottom out and crack the radiator. This can also be caused by an incorrect length bolt being used.

Valeo advises that care be taken when fitting and tightening the top mounting bolt through the slam panel and ensure that the correct length of fastener is used. Radiators returned displaying this fault will not be accepted under warranty.

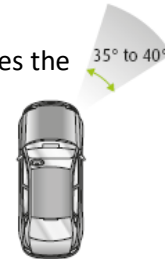
L 002 Difference between FBL & DBL Technology

Vehicles: Various Models

Fixed Bending Light (FBL)

A vehicle fitted with a fixed bending light has an additional lamp which turns on when the driver turns the steering wheel to illuminate the corner.

The additional light illuminates the corner (right).



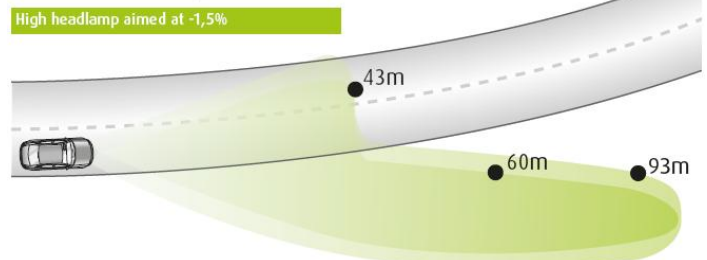
A FBL can be located in the fog lamp or headlight. In fog lamps, the unit has an extra reflection surface to point the light. In headlights there is an extra bulb inside the main unit.

Dynamic Bending Light (DBL)

A vehicle fitted with a DBL system does not have an additional light unit. The projector inside the front light rotates, illuminating the corner.

On vehicles fitted with standard fixed headlights, the range of light is greatly reduced when travelling around a corner (indicated below).

With conventional headlamp



In normal condition, it is considered that the visibility distance is 50 m.

With DBL headlamp

