

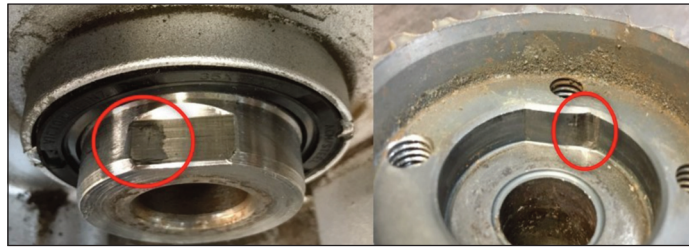


Tim Stock

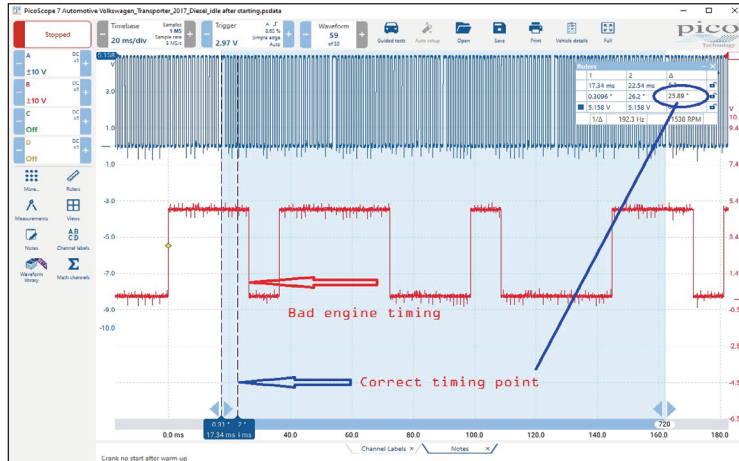
Hot start issues on a VW T6 Transporter with a CXGA engine

The customer complaint was that the Transporter, equipped with a CXGA engine, would start well from cold, and ran well with no apparent issues. But if the engine was stopped, it would not restart until a 15-minute time has passed.

No hard codes were present, but a pending P0341 in EOBD was noticed. The customer had already replaced the cam



Damage on the crankshaft sprocket caused the timing misalignment



The scope trace showed there was a timing misalignment problem

position sensor due to this code appearing on a regular basis, but it would take several drive cycles for the code to reappear. On checking the timing belt to confirm a timing issue, no misalignment was present.

A scope analysis of the cam and crank signals was performed, and the trace was compared to a known good signal for this engine code. We could see the issue was a timing misalignment. A deeper investigation was required, even though the timing marks and tools fitted correctly.

When replacing a timing belt on these engines, it is advisable to remove the crankshaft sprocket and inspect the timing belt to confirm a timing issue, no misalignment was present.

After the repair the engine started much faster from cold and no longer had the hot start issue.